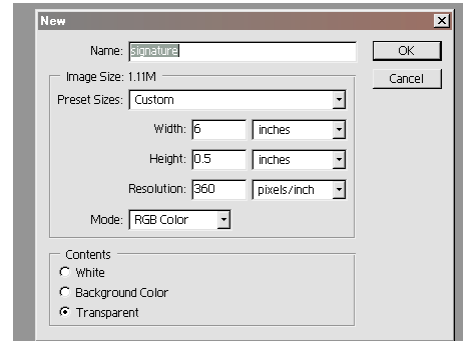


# Sign your work!

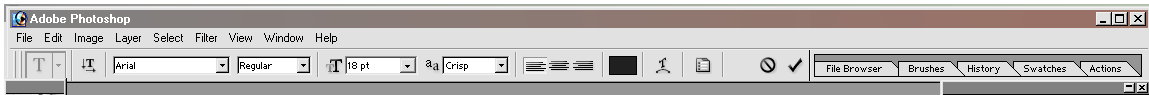
Here's a Photoshop 7 tip that will make it easy for you to add a signature and/or copyright notice to your digital prints.

## Creating your own copyright signature

- 1) Open a new document with the following custom settings:
  - Width: 6 inches
  - Height: 0.5 inches
  - Resolution: 360 ppi.
  - Mode: RGB Color
  - Contents: Transparent



- 2) Select the type tool (T)
- 3) In the type tool options bar at the top of the page, choose whichever font you like and set its size to 18 points and to left justify



- 4) Make sure the default colors are selected on your toolbar
- 5) Type your copyright notice, which usually consists of your name and the year. You can add 'all rights reserved' if you want to be fancy. (Hint: PC Users - to make the © sign, hold down the alt key while pressing in succession 0, 1, 6, and 9 on the number keypad. Mac Users – press Option G)
- 6) If you wish to add a signature, use the brush tool on a separate layer (A graphics tablet is much easier to use for this than a mouse.) then merge visible layers.



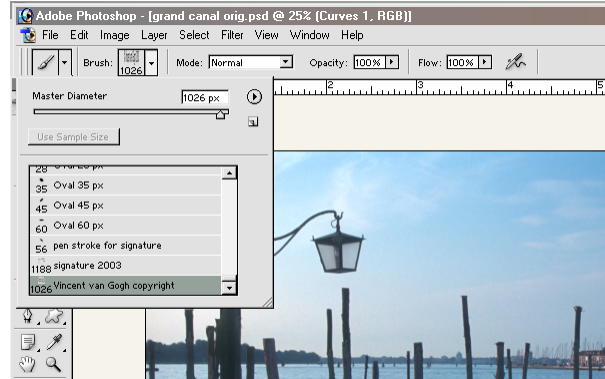
- 7) Crop down to just the printed area.



- 8) Select all (Select > All) from the 'Select' pull down menu or just use Ctrl A (Option A on a Mac)
- 9) Choose 'Define Brush' from the Edit menu and give it a distinctive name in the dialog box. Click OK. Your copyright is now a standard brush with Photoshop. You can call it up at any time within any image to 'sign' your work!
- 10) Save and close the signature document. (You'll need it to change the date next year!)

## Adding your copyright to an existing image

- 1) Open an image to which you wish to add your signature / copyright.
- 2) Choose the brush tool (B) from the toolbar
- 3) From the tool options bar, open the brush palette and scroll down to your previously made signature / copyright. Select it.



- 4) Add it to your image, either directly on the picture or outside the border. (If you choose to add your copyright directly on the image, put it on a separate layer!)



- 5) To add your signature on an outside border, first create an outside border by using 'Image > Canvas Size' from the pull down menu to create a strip on the bottom or side of your image.



For a really egotistical (excuse me, I meant artistic) flair, you can alter the color, the size and/or the blending mode of your copyright / signature brush just as you would any other brush:

