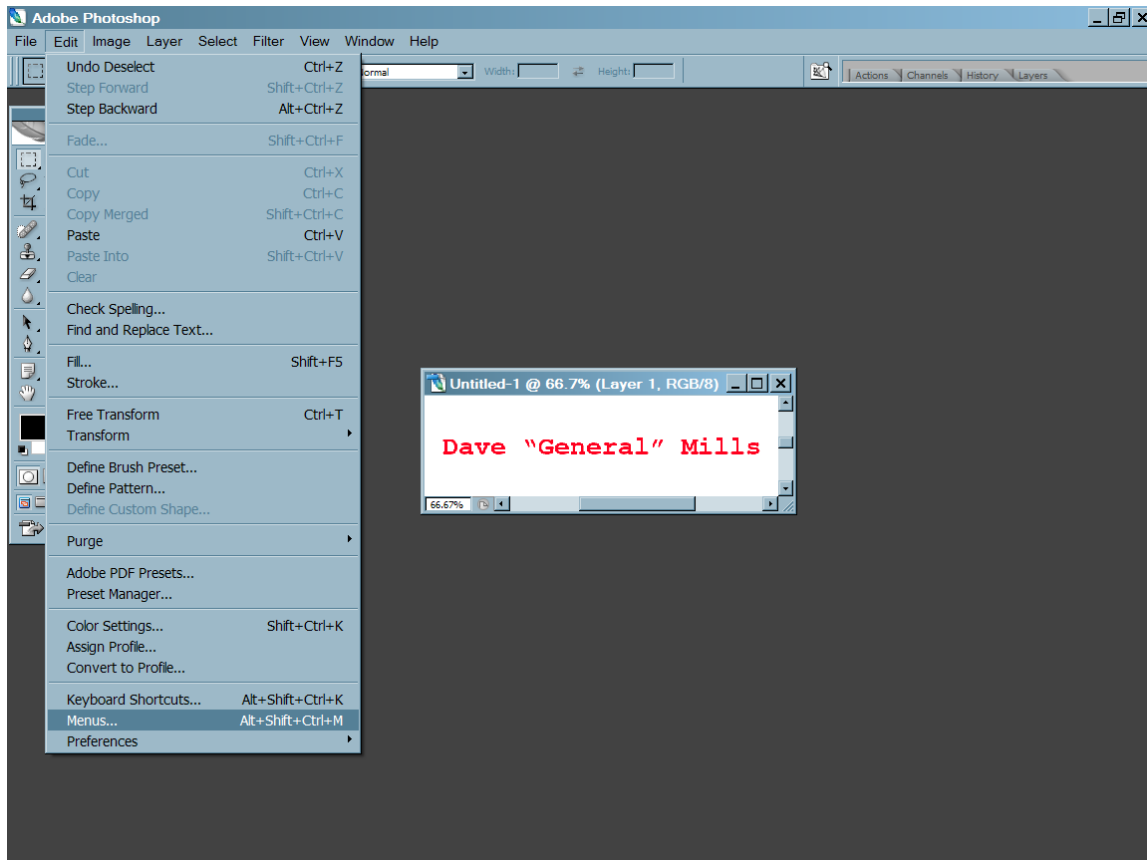


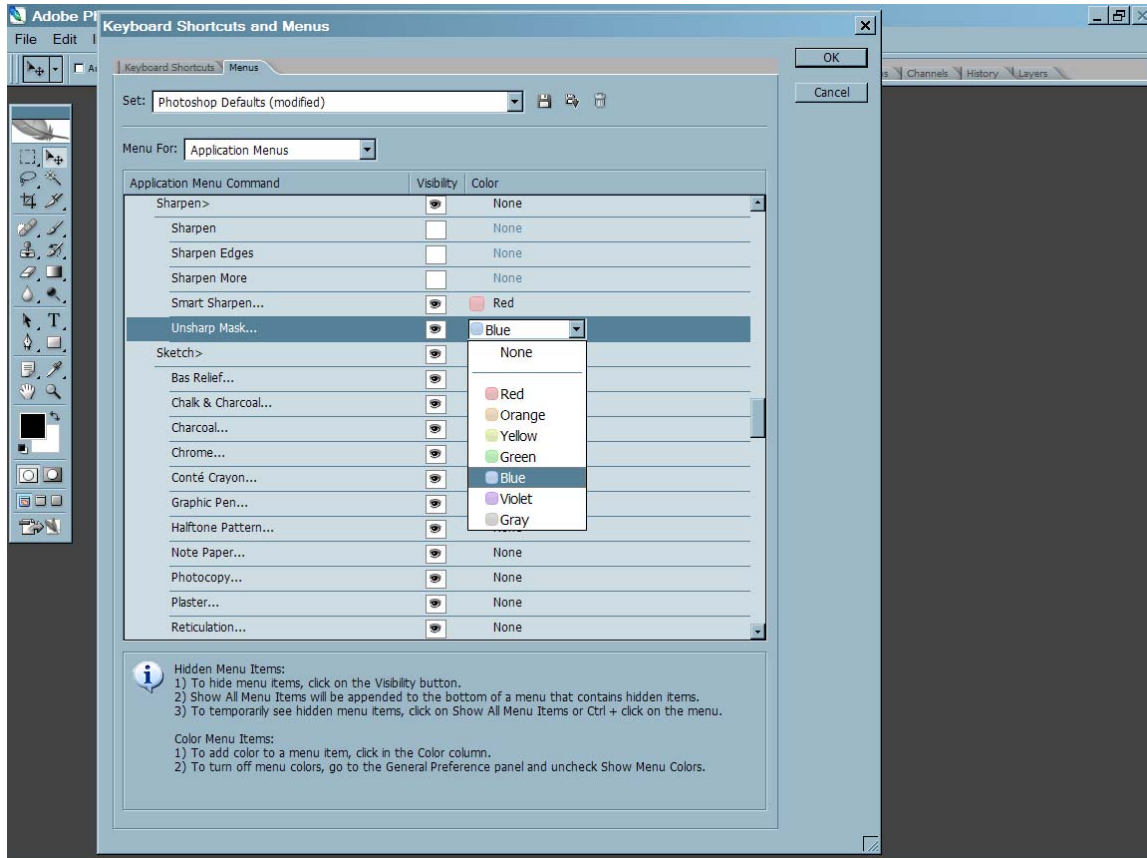
Photoshop Tip from Jerry

Here is a neat trick to find tools faster.

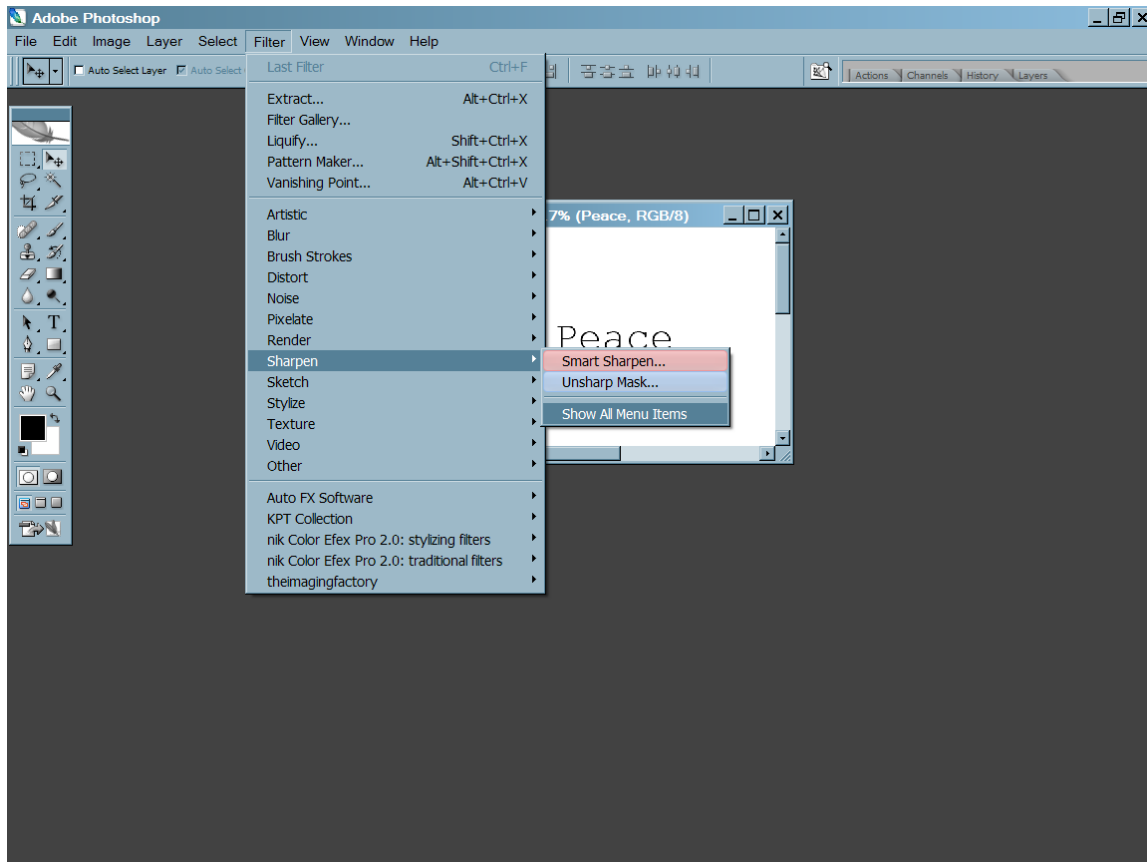
First, delete some of the tools that you do not use. To do that, go to the Photoshop toolbar click Edit>Menus



Expand the Filters and scroll to Sharpen. Click on the eyeball on the filters that you do not use. This will delete them from the list. I do not use Sharpen, Sharpen Edges or Sharpen More. So I clicked on the eyeball. I do use the Smart Sharpen and Unsharpen Mask frequently. I make these two filter more visible, in the Color Column left click on the word "none" in the row of the filter and select a color.



If you wish to add the deleted filters back to the list, simply expand Filters>Sharpen, Click Show All Menu Items.



This can be done to all of the nine Menu Items or to any of the nineteen Palette Menus.