

Installing the RCC Action in Elements 3.0

Warning: While not difficult, installing this action requires familiarity with deleting and moving files on your computer hard drive. Done improperly, it could cause problems. If you are not comfortable with performing these tasks, enlist the aid of someone who is.

There are four files associated with the RCC Elements 3.0 action: horizontal.psd, horizontal.atn, vertical.psd and vertical.atn.

- 1) From the RCC website, download the four files to your desktop.
- 2) Create a new folder, naming it RCC Action.
- 3) Put the four files in this folder.

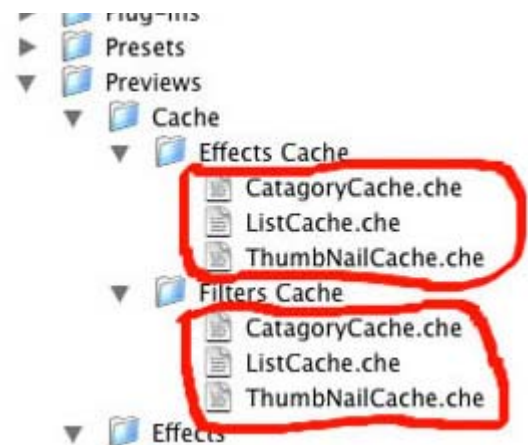
Make sure the Elements program is not running.

- 4) Go to the Elements folder in your applications/program files folder:

For Mac users:

- 1) Put the RCC action folder into Adobe Photoshop Elements > Previews > Effects.

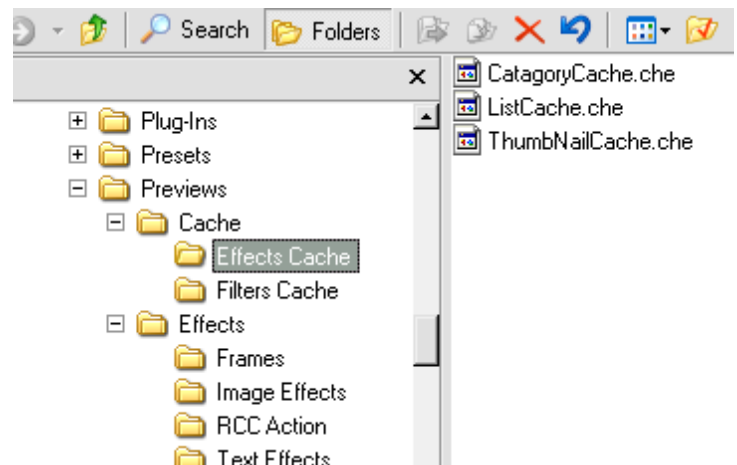
2) Go to Adobe Photoshop Elements 3 > Previews > Cache, and empty the Effects Cache folder. **Leave the folder**, but throw **away (delete) the three files inside it**, the ones that are circled in the top group in the illustration. You don't have to empty the Filters cache as well (unless you are installing an action into the Filters folder), but some people prefer to do this at the same time.



For Windows users:

- 1) Put the RCC action folder into C:\Program Files\Adobe\Photoshop Elements 3.0\Previews\Effects.

2) Now go to C:\Program Files\Adobe\Photoshop Elements 3.0\Previews\Cache, and empty the Effects Cache folder and the Filters Cache folder. **Leave the folders**, but **throw away (delete) the three files inside** each one. The files are the same ones you can see circled in the Mac screenshot.



The one time installation of the RCC action is now complete!

Using the RCC Actions:

Launch (Open) the Elements program. The first time you start it after installation of the actions, it will take the program a minute or two to rebuild the thumbnail cache, so give it time to finish.

For the most accurate color reproduction on the RCC projector, make sure the color settings in your Elements 3.0 edit menu are set to limited color management.

Your action folder is located in the Styles and Effects menu. Choose Effects from the left hand pull-down menu and then RCC Action in the right hand menu. When you wish to use the action on a finished image, just double-click the appropriate button to run your action.

