



Is Lightroom[®] Right for You?



An overview of
Adobe
Lightroom[®] 2

George Garbeck

For More Information

The screenshot shows the 'Tutoring' page of the George Garbeck Photography website. The page has a dark background with white and red text. At the top left is the logo 'George Garbeck Photography'. To the right of the logo is the word 'Tutoring' in red. Further right is contact information: '576 Pine Lake Dr. Twp. of Washington, NJ 07676 201 666-4068' and the email 'ggarbeck@earthlink.net'. Below the logo is a quote: 'Tell me and I'll forget, show me and I may remember, involve me and I'll understand. -- ancient Chinese proverb'. On the left side is a vertical navigation menu with links: Home, Portfolios, Galleries, Tutoring (highlighted in red), Biography, Artist Statement, Events, Links, Purchase Prints, and Contact. The main content area is titled 'Learn Digital Imaging' in red. It contains two paragraphs of text and a bulleted list of topics. To the right of the main content is a red link: 'Photoshop and Digital Imaging: Tips & Tutorials'. At the bottom of the main content area are three logos: Adobe Certified Expert Photoshop, PSA (Photographic Society of America), and NPP (National Association of Photoshop Professionals). At the very bottom of the page is the copyright notice: '© 2008 George Garbeck. All Rights Reserved.'

George Garbeck Photography

Tutoring

576 Pine Lake Dr.
Twp. of Washington, NJ 07676
201 666-4068
ggarbeck@earthlink.net

Tell me and I'll forget, show me and I may remember, involve me and I'll understand. -- ancient Chinese proverb

Home
Portfolios
Galleries
Tutoring
Biography
Artist Statement
Events
Links
Purchase Prints
Contact

Learn Digital Imaging

I conduct private one-on-one classes and small workshops in computer imaging. Classes can be tailored to your individual needs, interests, and experience level. Learn at your own pace in your own home. I emphasize the integration of technology with individual artistic vision using Adobe Photoshop and other imaging applications. If you are interested in learning this emerging art form, contact me via [E-mail](mailto:ggarbeck@earthlink.net) or phone at (201) 666-4068.

The rate for private lessons is \$50 per hour. If I have to travel far outside Bergen County, a small travel allowance may be necessary. This can be discussed prior to making any arrangements.

The topics covered are fully customizable to your needs and may include:

- Basics of exposure (light, aperture, shutter speed, etc.)
- Camera operations
- Optimizing images in Photoshop (all versions including Elements)
- Organizing your photos (Digital Asset Management) using Lightroom
- Editing workflow
- Photoshop as a graphic arts medium (integrating text with images)
- Printing
- Review and critique your images
- Elements of composition
- Advanced digital manipulation (montages, layer masks, etc.)
- Understanding the histogram
- Artistic vision in photography

Photoshop and Digital Imaging: Tips & Tutorials

Adobe CERTIFIED EXPERT Photoshop®

PSA Photographic Society of America

NPP National Association of Photoshop Professionals

© 2008 George Garbeck. All Rights Reserved.

For a powerpoint version of this program:

www.georgegarbeck.com/tips.html

For private tutoring in Photoshop, Lightroom & Digital Photography:

www.georgegarbeck.com/learn.html



My Teaching Philosophy

- Concept-Driven vs. Rules-Driven
 - Limitation of Step-by-Step Tutorials
 - Don't always work
 - Can't 'see the forest for the trees'
 - Understanding Underlying Concepts
 - Allows for flexibility and self-learning
 - There is no 'perfect' workflow
 - Rigidity inhibits learning

Program Scope

- This program is primarily an overview for photographers who are not yet familiar with LR
 - It's impossible to cover every aspect of LR in the time allowed
- I've tried to include some 'tips' for those who already use LR

Syllabus

- What is Lightroom?
- The Library module
 - Key concepts: the catalog; keywording
 - Adding photos to a catalog
 - Managing your catalog
 - The Library module
 - The workspace
 - Importing and editing a shoot
 - Finding, sorting, moving, filtering images
- The Develop module
 - Key concept: non-destructive editing
 - Demonstration
- The Output modules
 - Slideshow, Print, Web

What is Lightroom?

An all-inclusive software program developed by & designed specifically for photographers so they may efficiently accomplish all the most common digital imaging tasks.

- Contains 5 'modules'
 - Each one performs different tasks
 - Library
 - Import, organize and view all your digital photos
 - Develop
 - Optimize: make corrections to photos: Crop, tonal adjustments, etc.
 - 3 Output modules: Slideshow, Print & Web
 - Show your photos to the world

Library Module

- Where you organize your photos
 - Quickly locate images or groups of images no matter where you have them stored!
 - Online & Offline
 - Import and edit a ‘shoot’
 - Dramatically improve your productivity
 - Rate and sort your images
- LR stores the information about your photos in a file called the ‘catalog’

Concept: The Catalog

Your actual photos are never stored in Bridge, Explorer, Photoshop or Lightroom

- **Your photos are located on digital media.**
 - Usually on hard drives either inside (internal) or outside your computer (external)
 - Memory cards, flash drives or optical media (CDs or DVDs)
- File browsers (Bridge, Explorer, Safari) just show you where your pictures are on your hard drive
- An image is only *temporarily* open in Photoshop or Lightroom while you are working on it.
 - The actual image is still in its original location on the hard drive. It does not 'move' into PS or LR

Concept: The Catalog

Lightroom Catalog

- Contains thumbnail images of all your photos
- Contains information (metadata) about your images
- The actual images are stored on hard drives, CDs or DVDs

The Sears Catalog

- Contains photos of all their products
- Contains written information about products
- The actual products are in a store or a warehouse

Concept: The Catalog



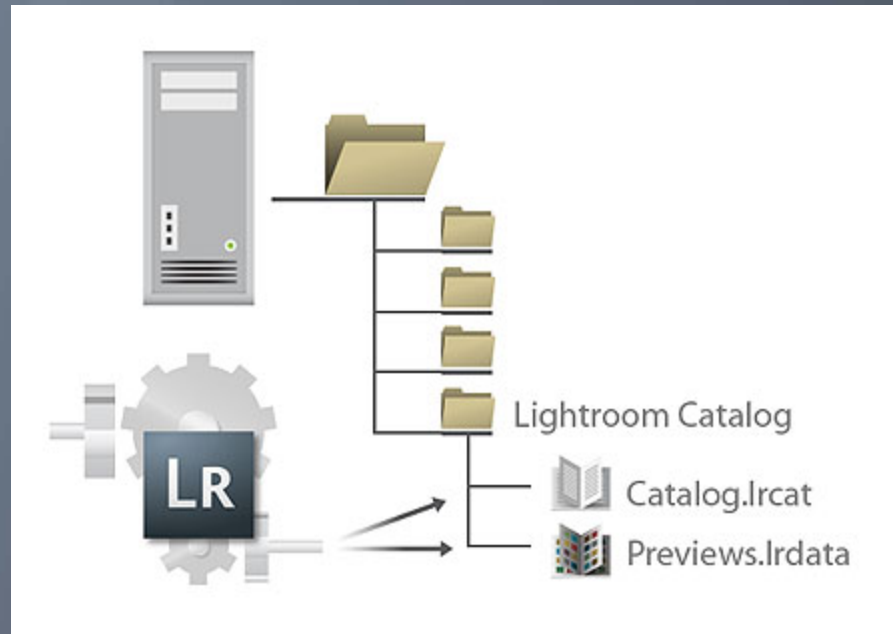
A Library Catalog

- Stores information about **all** the books in the library on cards
- Even books in remote branches of the library
- Provides info about the books & tells you where to find them

The LR catalog does the same thing

- It keeps track of all your photos, whether they are online or offline
 - Offline: an external hard drive that's not turned on or a CD, DVD that's on a shelf somewhere
- Bridge and other file browsers, can't see offline images

Where is the Catalog?



- You never need to access the catalog directly
- You should backup your catalog regularly
 - LR can do this automatically for you
- This is different from backing up your images

Step 1: Organize Your Hard Drive

- Before you start to use Lightroom
 - Put all photos within one main folder
 - Call it 'My pictures', 'Images', etc.
 - Group in subfolders
 - Usually sequentially by topic / shoot
 - Give meaningful descriptive names or name by date
 - Entire folder / subfolder structure should be backed up (mirrored) to separate drive

Adding Images to the Catalog

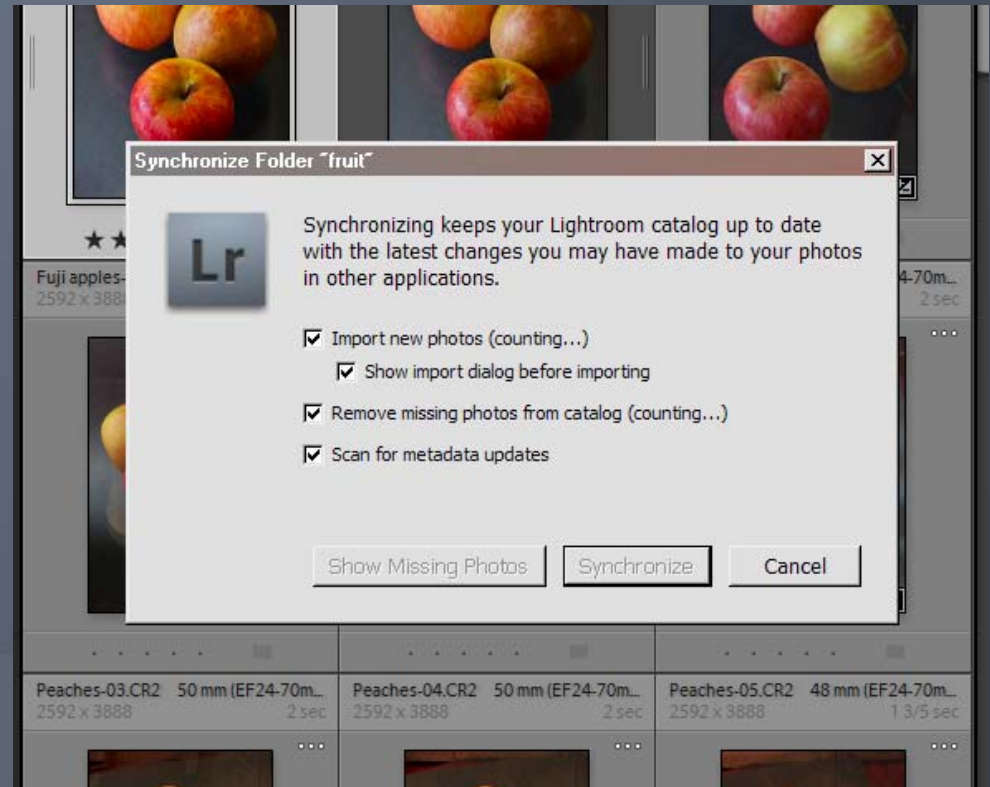
- 1 - Adding existing photos from your hard drive
 - A Lightroom catalog starts out empty
 - You have to tell LR where your photos are
 - You're really 'linking' or 'pointing' the catalog to your photos, not importing them
 - Photos stay at their present location
 - The catalog stores previews (thumbnails) and metadata
 - Only do once
- 2 - Adding new photos
 - Must be done in LR
 - Photos are copied from the memory card to the hard drive and added to the catalog in one step

Managing Your Images

- Once you've started using LR:
 - ALWAYS move, copy, rename or delete your photos within LR
 - LR will not be aware of any changes made in Explorer or Finder
 - Delete a photo outside LR and it will still appear in the catalog
 - If someone puts a book on the wrong shelf in a library, the card catalog will not help you find it

Synchronizing

- To make sure your catalog is up-to-date with your hard drives:
 - In the Library module
 - Right click on a folder and choose ‘Synchronize folder’
 - Make take a few minutes for large folders



Concept: Keywording

- Keywords (tags) are descriptive words or short phrases that you attach to your photos so you can search and quickly find them
 - Keywords are hidden within each photo's metadata
- There are many 'keywording strategies'
 - Create keywords that fit you and the way you think about your images

Keywording: An Example



- Nature
 - Water
 - Waterfall
 - Spring
- New York State
- Appalachian Trail
 - Fitzgerald Falls
- Sports
 - Hiking
- People
 - Friends

A Tour of The Library Workspace

Workspace: Center Preview Area

- Size slider
- Select by clicking a thumbnail
- J shortcut toggles cell info
- E or spacebar for loupe view
 - Shift tab to hide panels
- Navigation panel to fit; spacebar to 1:1 view
- F & L shortcut keys toggle view
- Right click to view images location in Explorer (Finder)
- Selecting Images
 - Ctrl vs. shift
 - Selected vs. active
 - Cell border to deselect others
- Sorting Images
 - Sort images by capture time, aspect ratio, edit time, star rating, other attributes or create a custom sort order by clicking and dragging.
- Stacking

Workspace: The Panels

- **Collapsible**
 - Click on gray triangle to show
- **Auto Hide & show vs. manual**
 - Right click on triangle to change setting
- **Filtering Menu**
 - Tapping backslash to access. Filter based on searchable text fields, attributes, and metadata.
- **Filmstrip view**
 - Shows image path

Workspace: Left Panel

The organizational hub of LR

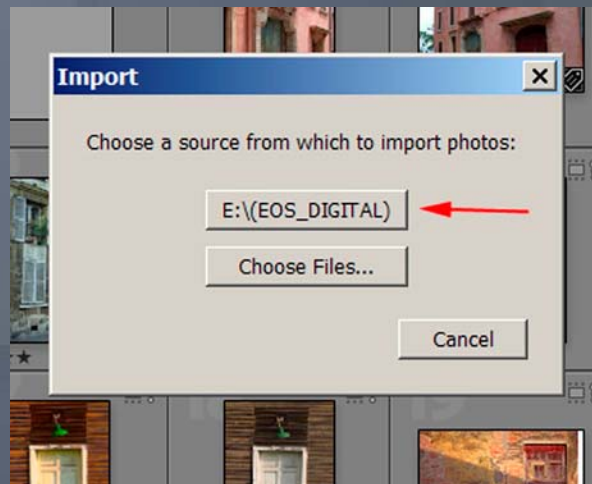
- Navigator
- Catalog
- Folders
 - Shows the folder structure, by volume, in which images are stored on hard disks and other media.
 - Can move folders from one hard disk to another.
 - Click to view images of any folder in main area
- Collections
 - A great organizational tool
 - User-selected groups of images. Rather than copying images to a new folder, collections simply refer to images in their original location. Making adjustments from the folder view will update it any collections it exists, and vice versa.
 - Click to view in preview area
 - Valuable sorting and organizational tool
 - Example: collection of possible includes for the next competition

Workspace: Right Panel

- **Right Panel**
 - Histogram
 - Of active image
 - Quick develop
 - Keywording
 - Keywording List
 - Metadata
 - Default, exif, etc.
 - Presets (copyright)

Importing and Editing a Shoot

Import from memory card, adding metadata, editing, choosing and deleting rejects, finding picks, rating, comparing, adding keywords, backing up



Importing & Editing Workflow

- **Import**

- **Dialog Box**

- A & B Choose Location
 - C Rename
 - D Add copyright
 - E Add generic keywords

- **Edit**

- **Flag rejects and picks**

- Pick 'keepers'
 - Rank images based on 5 star scale

- **Delete rejects**

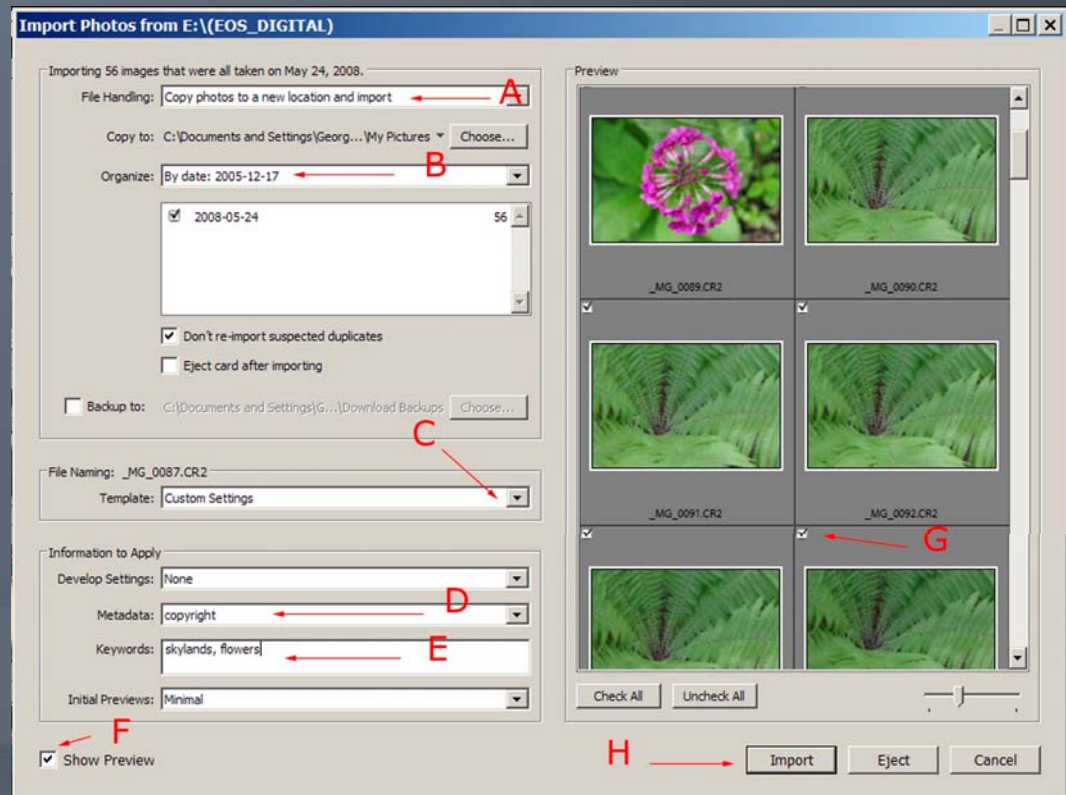
- Choose: Photo / delete rejected photos

- **Using compare view**

- **Created collection of 'keepers'**

- **Add specific keywords**

- **Backup**



Finding & Sorting

Selecting images, the filter bar, sorting, collections & exporting images

Filter Menu

- Backslash key to access
- Choose all photos from catalog panel
- Filter based on:
 - Searchable text fields
 - Attributes
 - Metadata
 - Can use multiple criteria
- Click 'done' when finished

Exporting Images

Use the 'export' button on the left library panel for a quick way to output a group of selected images

- Presets
 - Use existing or create and save your own
 - Competitions
 - E-Mail
 - Burn CDs

Develop Module

- Image editing
 - Levels, color balance, sharpening, etc.
 - Make all common editing adjustments
 - May never need PS again!
 - Can only develop ‘online’ images
- Non-destructive editing
 - Does not change originals like PS does
 - Don’t need multiple versions of a picture
- What PS does better
 - Local adjustments (Selections)
 - Compositing (Layers)

Concept: Non-Destructive Editing

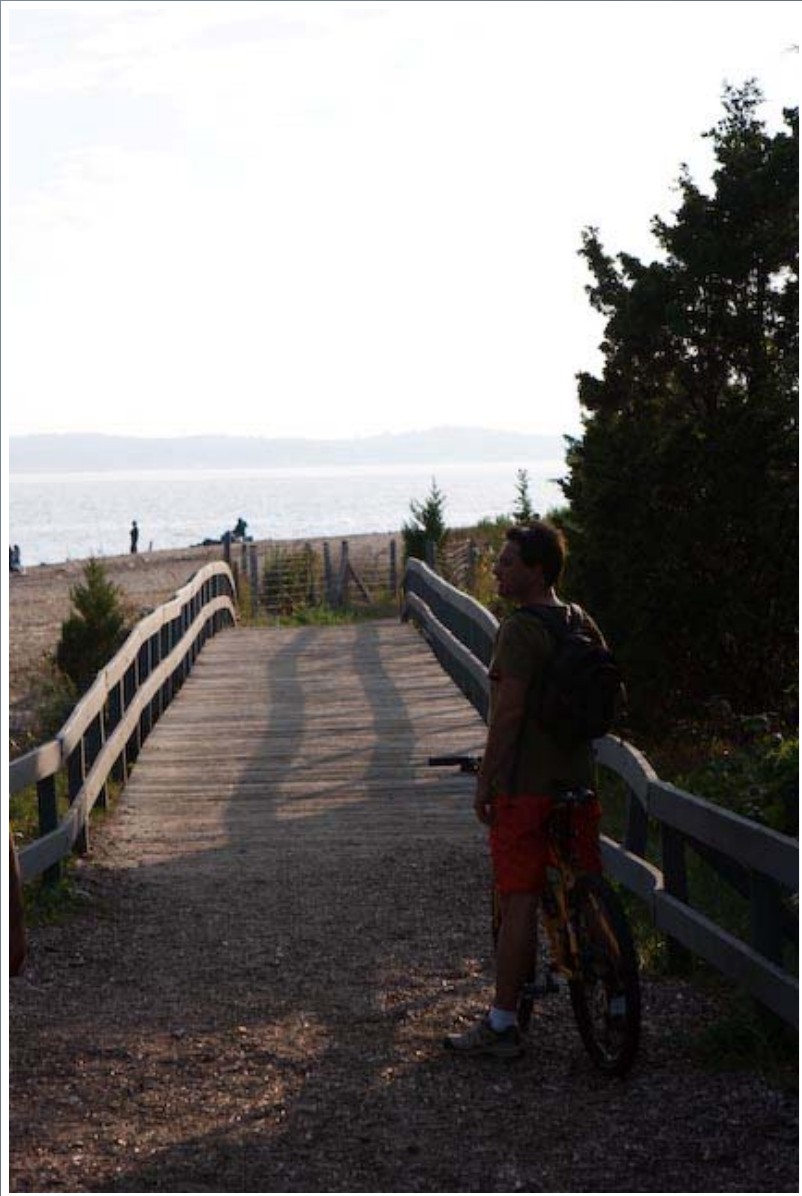
LIGHTROOM NEVER ALTERS YOUR
ORIGINAL IMAGE FILE



Adjustments are recorded as a set of instructions in a separate file and applied on the fly to the image.

- The integrity of original file is not compromised
- Any or all adjustments made to an image can be undone *at any time in the future*.
- Several 'sets of instructions' = virtual copies

Develop Module



- Grayscale
- Split Toning

Develop workflow

- **Work sequentially down the right panel**
- **Crop**
- **White Balance**
 - Presets
 - Eyedropper
 - Sliders
- **Histogram**
 - **Clipping warning**
 - Hover or click

The Tone Sliders

- **Exposure**
- **Recovery works to bring back highlights**
- **Fill Light lightens shadows w/o affecting blacks**
- **Blacks - for the darkest shadows**
- **Brightness - like the gamma slider in levels**
- **Contrast - avoid**
- **Clarity**
- **Vibrance - brightens dull colors without oversaturating the already brilliant ones**
- **Saturation – avoid using**

More Adjustments

- **Tone Curve**
 - Direct edit ‘bullseye’
 - Sliders
 - Point curve presets
- **HSL / Color / Grayscale**
 - Ability to adjust saturation of individual colors
- **Detail**
 - Noise Reduction
 - Sharpening
 - 100%
 - 4 sliders

The Adjustment Brush

- Make local adjustments (dodging & burning)
- For exposure, sharpness, saturation, clarity, etc.
- Set amount first (guess – you can change after)
- Cursor over pin shows mask
- Option / alt to erase
- Auto mask - leave checked

Other Develop Options

- Before / After
- Virtual Copies
 - right click (one button mouse? = ctrl click)
 - to make different versions
 - non-destructive
- Presets
 - Monotone, contrast, sharpening, etc.
- Same changes to multiple photos
 - Copy / paste
- History
 - Snapshot

The Slideshow Module

George Garbeck Photography

Library | Develop | **Slideshow** | Print | Web

Options

Layout

- Show Guides
- Left 43 px
- Right 43 px
- Top 43 px
- Bottom 43 px
- Link All

Overlays

- Identity Plate
 - George Garbeck Photography
 - Override Color
 - Opacity 100 %
 - Scale 28 %
 - Render behind image
- Rating Stars
 - Opacity 100 %
 - Scale 26 %

Preview Play

1 2 Collections / ... / 21 photos / 1 selected / concergerie-orig.psd Filter: George

The Slideshow Module


- Select photos in Library or choose a collection
- Many configurable styles
- Outputs customized .pdf or .jpeg slideshows
- Not as sophisticated as Pro Show Gold

Print Module

George Garbeck Photography

Library | Develop | Slideshow | **Print** | Web

▼ Preview




▼ Template Browser - +

- ▼ Lightroom Templates
 - (1) 4 x 6, (6) 2 x 3
 - (1) 7 x 5, (4) 2.5 x 3.5
 - (2) 7 x 5
 - 2-Up Greeting Card
 - 2x2 Cells
 - 4 Wide
 - 4x5 Contact Sheet
 - 5x8 Contact Sheet
 - Fine Art Mat
 - Maximize Size
 - Triptych
- ▼ User Templates
 - 11x14 horiz on 13 x19 velvet art
 - 11x14 vert on 13x19 velvet art**
 - 2 up 13x19
 - 4x6 semi gloss

► Collections - +

Page Setup...



Layout Engine ▼

Contact Sheet / Grid

Picture Package

Image Settings ▼

- Zoom to Fill
- Rotate to Fit
- Repeat One Photo per Page
- Stroke Border
 - Width: 1.0 pt

Layout ◀

Guides ◀

Overlays ◀

Print Job ▼

Print to: Printer:

- Draft Mode Printing
- Print Resolution: 300 ppi
- Print Sharpening: Standard
- Media Type: Matte

Color Management ▼

Profile: 5PR2400 Velvet Fine Art

Rendering Intent: Perceptual

When selecting "Managed By Printer", remember to enable color management in the printer driver dialog box.

Print One Print...

Use: Selected Photos

Page 1 of 1

Print Module

- Workflow and color management simpler than PS
- Many different configurable templates
 - Different sizes of one image per page
 - Print more than one image on a page
 - Contact sheets
- Can make multiple prints with one click

The Web Module

The screenshot displays the Adobe Lightroom Web Module interface. At the top, the navigation bar includes "Library | Develop | Slideshow | Print | Web". The main workspace shows a gallery preview of a "Tuscany" website. The preview includes a header with "George Garbeck Photography", a main image with the word "Tuscany" overlaid, and a footer with "© George Garbeck, Zillixa Studio, All Rights Reserved". A vertical filmstrip on the left shows four thumbnails. The right-hand panel is the "Engine" settings area, with "Lightroom Flash Gallery" selected. Below it are sections for "Site Info", "Color Palette", "Appearance", "Image Info", "Output Settings", and "Upload Settings". The "Upload Settings" section shows "Put in Subfolder" checked and "tuscany slideshow" as the folder name, with a "Full Path" of "public_html/tuscany slideshow". At the bottom of the panel are "Export..." and "Upload" buttons.

The Web Module

- Non-programmers can easily create web galleries
- Select photos in Library or choose a collection
- Many configurable html and flash styles
- Galleries can be automatically created and uploaded to your server (website)

Summary

- LR vs. Bridge
 - LR manages entire collection. Bridge looks at one folder.
 - Workflow: LR designed for the way photographers' work
 - Bridge is for everyone (designers, etc.)
 - LR only 'sees' photos; Bridge 'sees' other file types
- LR vs. PS or PS Elements
 - LR printing module better.
 - PS better pixel editing features (layers, selections, masks etc.)
 - Use PS to create montages and 'manipulated' images.
 - Slideshow and web gallery in LR better
- Summary
 - PS and LR are similar, LR has a more intuitive interface
 - With LR spend less time with computer and more time shooting.

MERRIE MELODIES
REG. US PAT. OFF.

"That's all Folks!"

A WARNER BROS. CARTOON

DUBBED VERSION © 1995 TURNER ENTERTAINMENT CO.
MUSIC © 1995 WARNER BROS. © 1995 WARNER BROS.
ALL LOGOS AND CHARACTERS ARE TRADEMARKS OF WARNER BROS.