


## Installing Brushes

### 1

When you find a brush set on the Internet you'd like to try out, click the appropriate link to download the file containing the brushes to your computer. For selection of some of the best free Photoshop Brushes, [click here](#). Go to your browser's download folder and look for the .abr file that was just downloaded. The .abr file type is for Adobe Photoshop brushes and will typically be


displayed with the brushes icon 

### 2

Copy or move the .abr file to your Photoshop installation folder. If you're a Mac user, this folder will be Applications > Adobe Photoshop CS3 > Presets > Brushes. If you're a Windows user, it will typically be C:\Program Files\Adobe\Photoshop\Presets\Brushes. Note that these folder names may vary depending on which version of Photoshop you have and whether or not it was installed in the default location.

Quit and restart Photoshop so that it will pick up the new brushes.

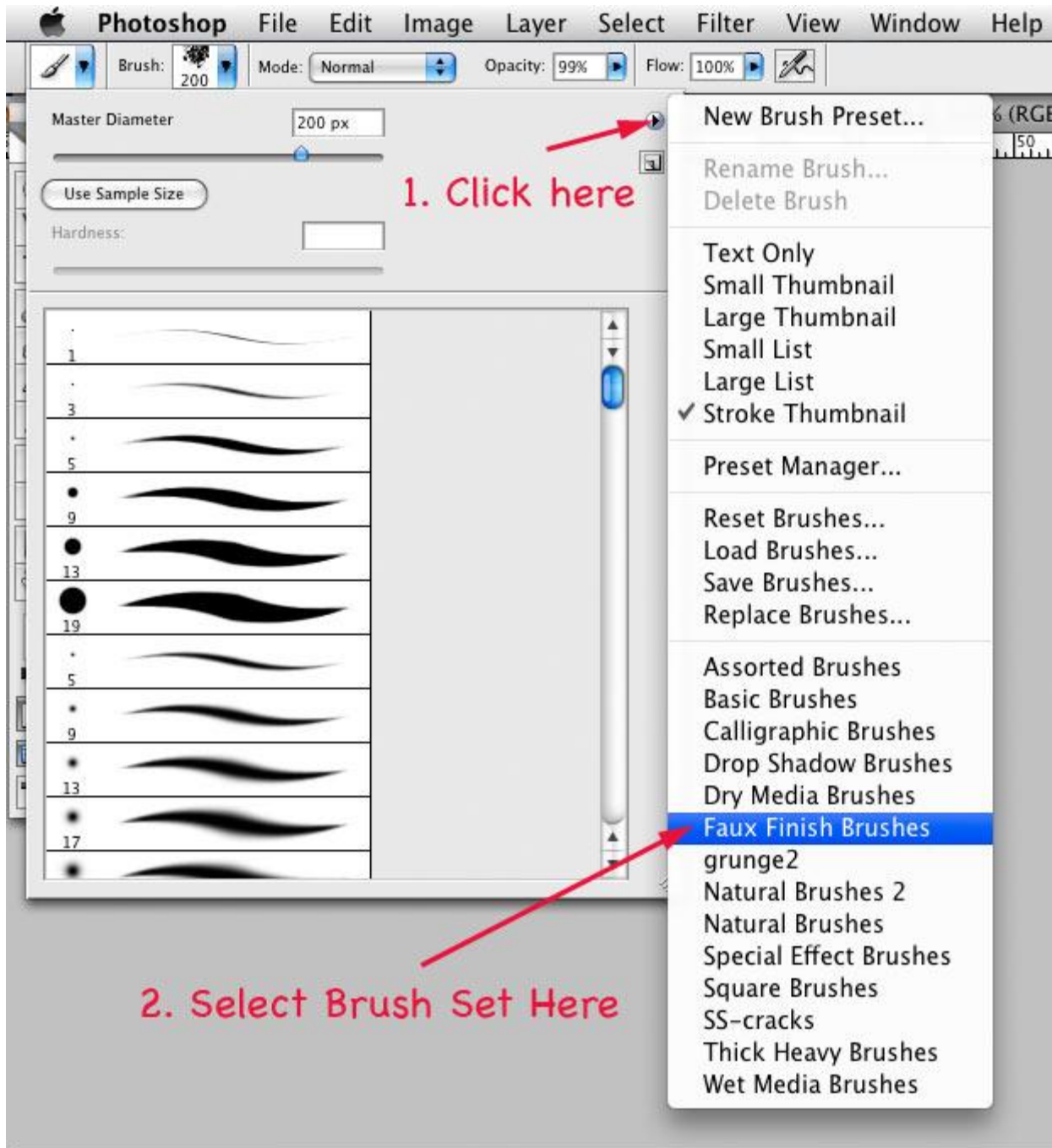
### 3

Select the brush tool by pressing b or clicking on the brush icon in the tools palette . Next go to the tool bar and click the disclosure triangle to open the Brush Presets Picker:



# 4

In the picker, click the triangle on the right side to open the context menu. If you installed the .abr file in the correct folder, Photoshop will display the name of the brush set in the list as shown here:



# 5

You now have the option of appending the new brush set to the scrolling list on the left of the preset picker or having the new set replace those in the list. Choose whichever option suits you needs. Appending is handy since you can have multiple sets of brushes available at once. However, if you load many brush sets the list can get quite long, so sometimes it's easier to replace the presets with just the ones you'll be using next.

And at any time, you can use the "Reset Brushes..." option from the context menu shown above to get back to Photoshop's default set of brushes.

Now just select the brush you want from the presets list on the left and start painting!