


Using Photoshop Selection Feather

🕒: Monday, January 22nd, 2007 (**Last Updated:** January 21st, 2008)

👤: freetime



When I need to make a selection to adjust a specific part of image. I always use **selection feather** at least 1 px. Photoshop Selection feather will soften the edge of selection. The default photoshop feather is 0 px that will produce crispy and jagged edge. This will be more noticable in very higher resolution image. Following example is using *Marquee tool*  to fill color with different feather.



Selection Feather is very useful, especially when make selection to adjust blur or out-focus object. By using appropriate amount of feather, your image will look more natural.

Note: The *Feather Command* are depreciate in Photoshop CS3 and replace by more advance selection modification command call *Refine Edge*. See also Photoshop CS3 Refine Edge Command.



[Click to see larger image](#)



[Click to see larger image](#)

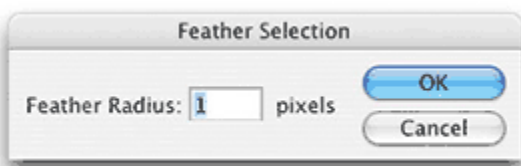
The amount of feather will vary depend on resolution of image. So specific amount of feather that produce best result in one image may not work with the other image if the image resolution are greatly different.

One simple way to add feather to selection is using menu *Select > Feather* or using short cut *Command(ctrl) + Shift + D* after you make a selection.

Note: In Photoshop CS3 you can access *Feather* command by, using menu *Select » Modify » Feather* or *Ctrl(Command) + Shift + D*

To apply Selection Feather

1. Make a selection
2. using menu *select > Feather* or *Command (Ctrl) + Shift + D*. Will bring up *Feather Selection Dialog Box*.
3. Enter *Feather Radius* and click *ok* button or press *return (enter)*

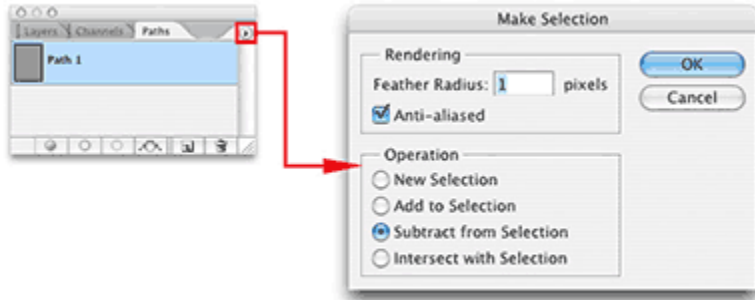




You can add feather before making selection. It's depend on the tool you are using
If you use *path tool* you can set feather radius by using *path make selection* dialog from *path palette menu*.

To convert path to selection with feather setting.

1. select path you want to convert

2. choose *path palette menu* > *make selection...* will open make selection dialog box.
3. Set feather radius and click ok.



If you use Lasso Tool  or Marquee Tool , you can use tool option to set feather radius **before** you make selection. otherwise you have to use menu *selection* > *feather* to apply feather. Please note that when you set feather in tool option or make selection dialog box photoshop will always remember your last feather setting. For *Lasso* or *Marquee* tool you can use *Tool Preset* to save your regularly use feather setting. here is how to use photoshop Tool Preset

Related Articles:

- [New Photoshop CS3: Refine Selection Edge](#)
- [Photoshop CS3 Toolbox: Tool Quick Reference](#)
- [Photoshop CS3: Quick Selection Tool](#) 
- [Photoshop Lasso Tool](#) 
- [Photoshop Magic-Wand Tool](#) 
- [Photoshop Marquee Tool](#) 
- [Using Photoshop Tool Preset](#)