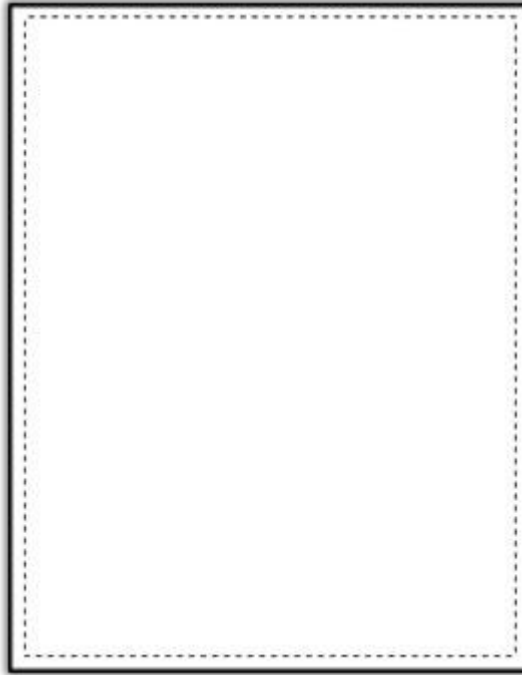


# Ripped and Torn Edges and Stuff Photoshop Tutorial

by [Tommy Maloney](#)

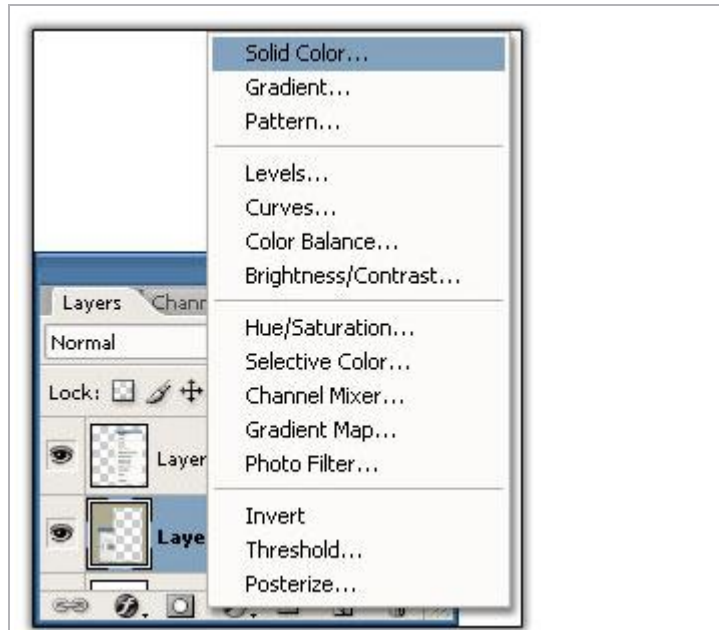
I was looking through a recent print magazine in which they were displaying artwork around the world. I saw a lot of grungy, torn, ripped and generally distressed design trends. I like trendy things, so I figured I'd show a way of recreating these effects in Photoshop.

Start with a blank document and make a square selection with the Marquee tool **M** a little smaller than your document.

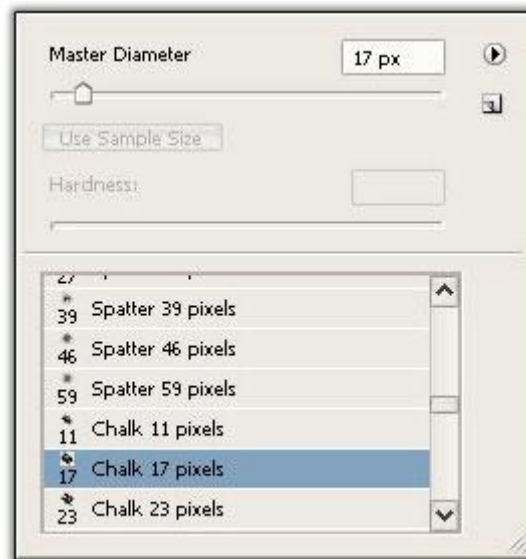


---

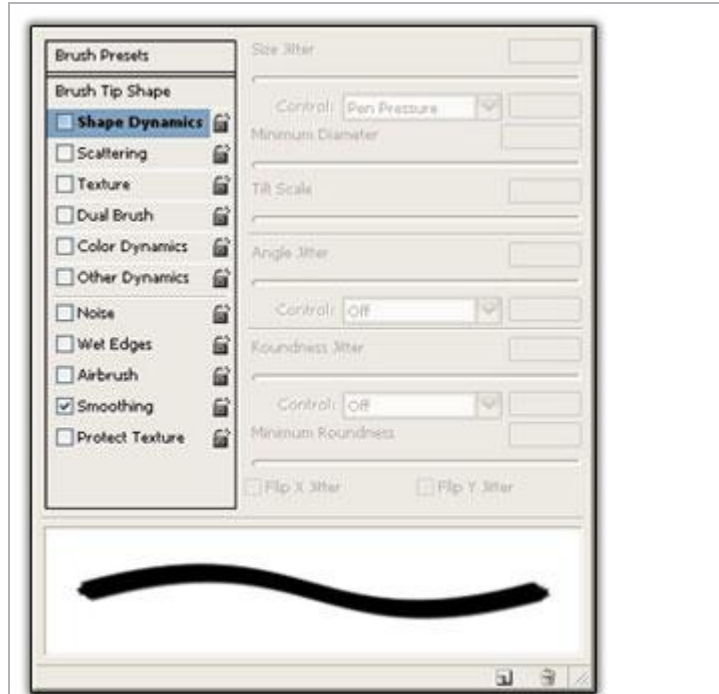
Create a Solid Color Adjustment Layer and fill it with whatever color you want. In this case, I used #6D665B.



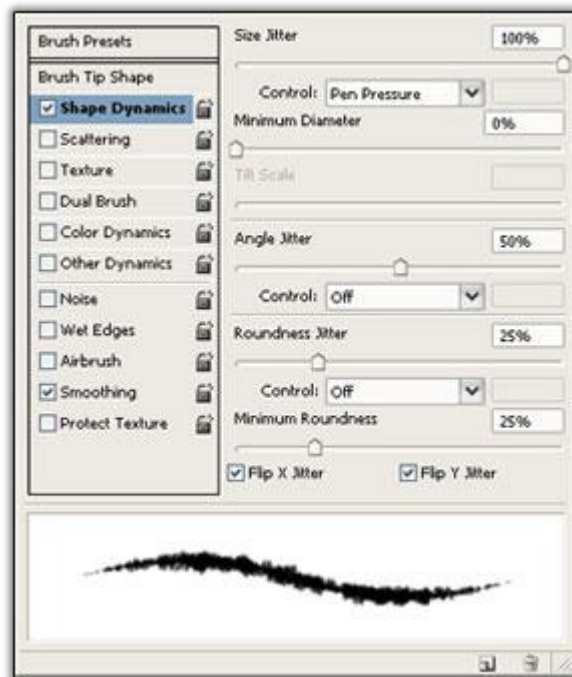
Now choose the Brush tool **B**. Select the Brush menu at the top, in your Option/Alts palette, and select the Chalk 17 pixels brush. NOTE: If you are having trouble finding the brush, when your Brush palette drops down, select the small arrow in the upper right corner, then select Small List. It should make your palette look like mine.



Press **D** to set your colors back to default. Bring up your Brush Option/Alts by pressing **F5** or going **Window > Brushes**.



Click on "Shape Dynamics" and change the settings similar to mine:

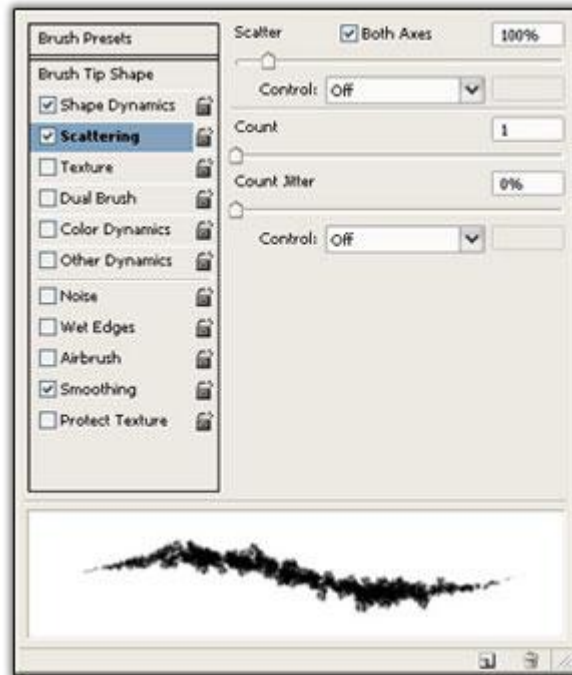


Size Jitter: 100%  
Minimum Diameter: 0%  
Angle Jitter: 50%

Roundness Jitter: 25%  
Minimum Roundness: 25%  
Flip X Jitter: Yes  
Flip Y Jitter: Yes

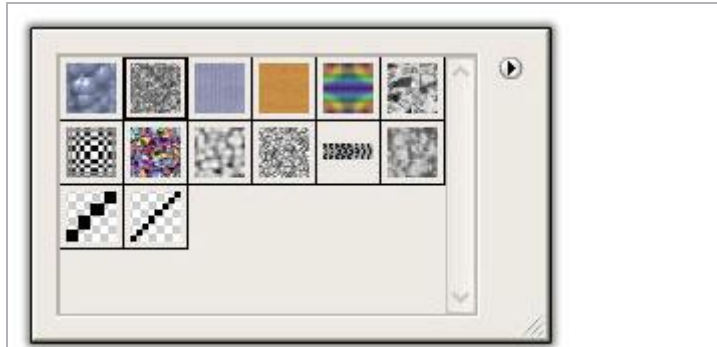
NOTE: I use a Wacom Tablet ([www.wacom.com](http://www.wacom.com)) so my brush tip shape preview probably looks different than yours. Mine is feathered at the edges.

Click on "Scattering" and change the settings similar to mine:

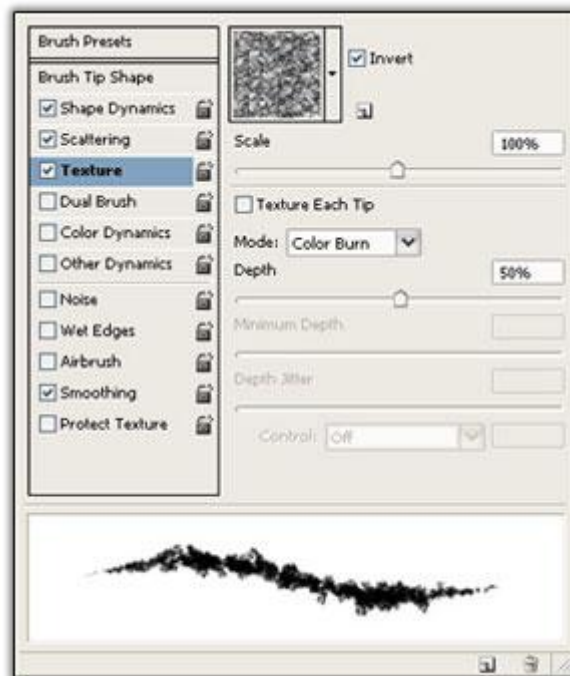


Scatter: 100%  
Both Axes: Yes  
Count: 1  
Count Jitter: 0%

Next, click on "Texture". Click on the texture preview window, and choose the second texture from the left.

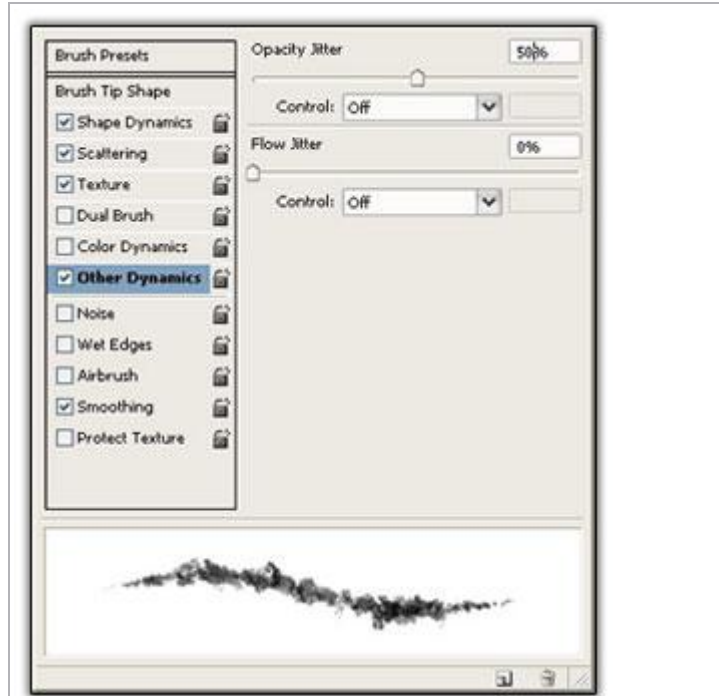


Then, change the settings:



Scale: 100%  
Mode: Color Burn  
Depth: 50%

Click on "Other Dynamics" and change the settings to:



Opacity Jitter: 50%  
Flow Jitter: 0%

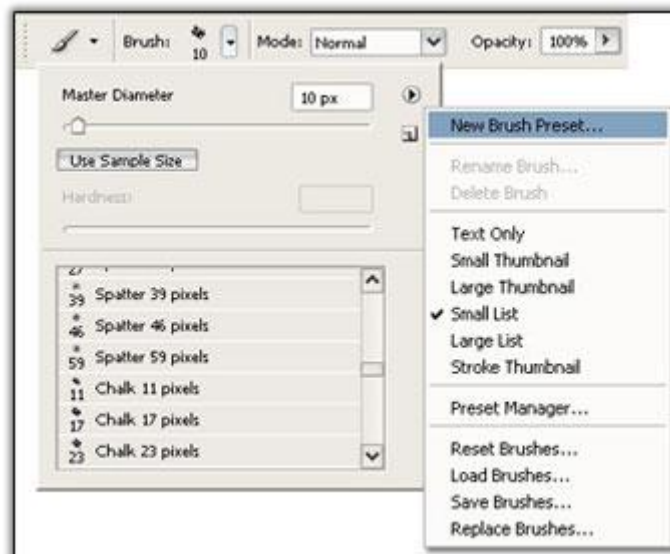
---

And finally, click on "Wet Edges" and make sure "Smoothing" is checked.

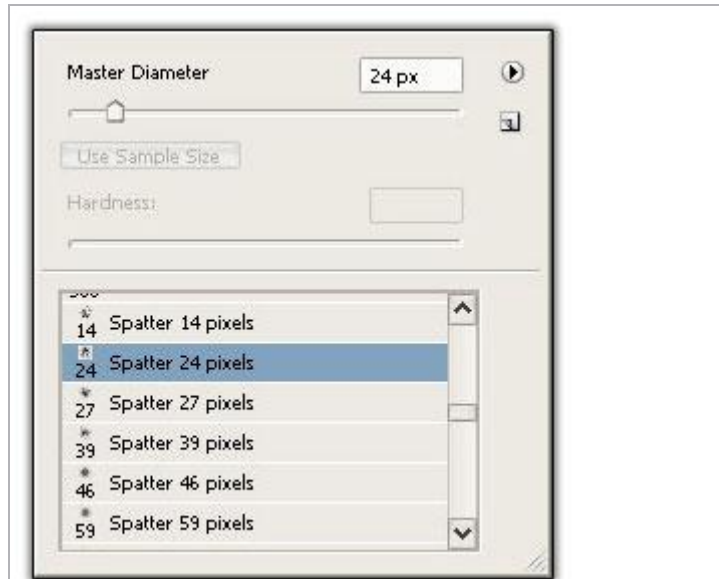
Now, just brush along the edges of your color square, and watch how it works.



You'll probably want to save your brush settings. Click on your Brush Presets menu again, and choose "New Brush Preset...". Name the brush whatever you like.

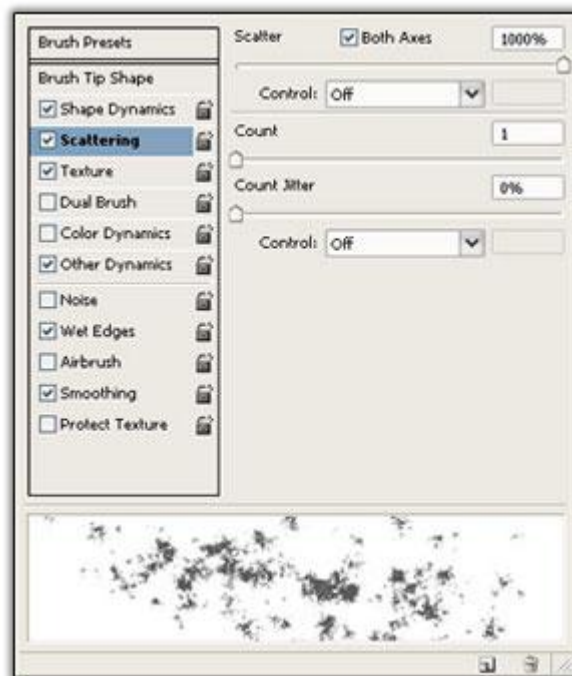


Go back to the Brush Preset menu and choose the "Spatter 24 pixels" brush.



Go back to the Brushes window and check the same settings you had earlier. When you click on each box, it should remember your settings from the previous brush. The only difference is we're going to set:

Scattering: 1000%



Set your foreground color to a light gray I used #B6B6B6.

Now, don't click and drag. Just point and click once, randomly across your image. This should add a little more distress.



Now, we're going to create another Solid Color Adjustment Layer. Make it slightly darker than the color of your first one. Then press **Command/Ctrl + G** to create a Clipping Mask. CS2 users have to use **Command/Ctrl + Option/Alt + G**.

Press **D** to set your colors to default. Press **Command/Ctrl + Backspace** to fill the mask with black. With white as your foreground color, use the same brush and same technique as above.



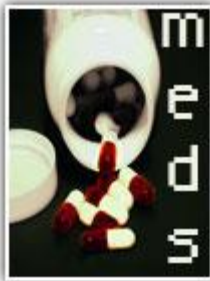
Now, to finish it off, you can add some Noise to the top layer by going **Filter > Noise > Add Noise**. Adjust the settings to your liking and apply.

The great thing about this technique is that you can experiment with many of the different brushes and their settings to get different effects. I'll leave it up to you to get creative.



### PhotoSpin Recommends - PhotoshopLAB

Looking to improve your Photoshop skills? Visit [photoshopLAB.com](http://photoshopLAB.com) for a bunch of tutorials, tips, news and forums.



### Search Hints

With the flu season still in high swing (did you know it can last until May?!), do yourself a favor and check out our medical imagery. You'll find cough syrups and chewable tablets galore when searching with "pharmacy" as a keyword.

[Photo: #1880003](#)

[Font: Algol](#)